

Apostrophes for Possession

Can you match up these nouns with the correct possessive phrase?

the bicycle belonging to
the soldier

Sam's cousin

the black hat
belonging to Albert

the soldier's bicycle

the net
belonging to Pamela

Albert's black hat

the cousin
belonging to Sam

Pamela's net

Look at the images and write the phrase saying who the item belongs to. The first one has been done for you.



lamp

belonging to



Lily

=

Lily's lamp



gas mask

belonging to



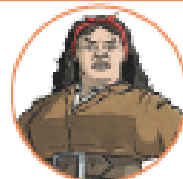
the evacuee

=



list

belonging to



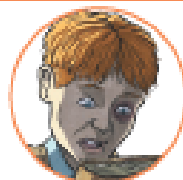
Mrs Scales

=



book

belonging to



Sam

=

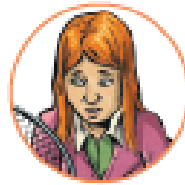
Apostrophes for Possession

Look at the images and write the phrase saying who the item belongs to. The first one has been done for you.



lamp

belonging to



Lily

=

Lily's lamp



gas mask

belonging to



the evacuees

=



list

belonging to



Mrs Scales

=



book

belonging to



Sam

=



bike

belonging to



Corporal Timmins

=



rations

belonging to



the Scales family

Apostrophes for Possession

Look at the images and write the phrase saying who the item belongs to. The first one has been done for you.



lamp

belonging to



Lily

=

Lily's lamp



rations

belonging to



the Scales family

=



gas masks

belonging to



the evacuees

=



investigation

belonging to



the children

=



base

belonging to



the soldiers

=



ginger hair

belonging to



mother

who
belongs to



Sam

=