

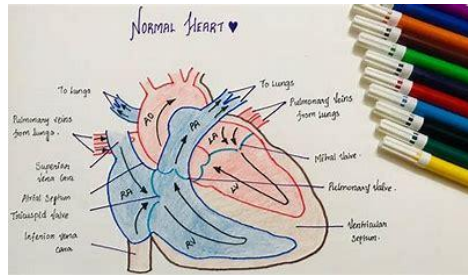
Homework Grid – Year 6 Term 3 – Building map skills, Circulatory System, DT
Choose one of the six ideas below to do as your topic homework this term.

1. Create your own map of the local area using recycled materials you have at home. For example, you could use cardboard from a cereal box.



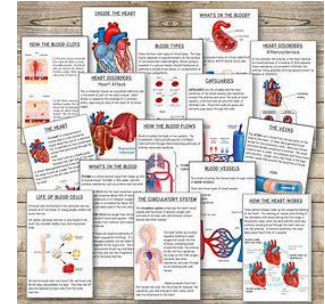
2. Make your own model of the heart using the video below.

(1) [How to Build a Model Heart | Wise Wonders - YouTube](#)



3. Create a booklet explaining how each part of the circulatory system works. Use the following website to help.

[The circulatory system - BBC Bitesize](#)



4. Find old photos of Gillingham, Medway and compare them to current up to date photos. What changes are there, why do you think this is?



5. With a budget of £50,000 choose what equipment you would buy for your playground in your primary school (ages 4-11). Draw the equipment and explain why you chose it, use this website for prices.

<https://www.kompan.com/en/gb>

6. Research an animal with more than one heart and explain the reason why they need more than one.

